

Fire 90A

Single 12" Active Line Array System



Overview

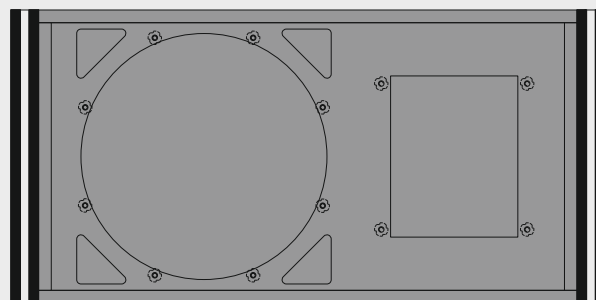
The Studiomaster Professional Fire 90A is a high performance 600W (RMS) / 1200W (Peak) 2-way bi-amplified active line array system. Integrating 12" LF driver, class D amplification, easy DSP presets, app control and more, the system is geared to deliver high SPL and a focused dispersion area. Housed in a durable, tour-grade wooden cabinet enclosure and equipped for quick-and-easy rigging, the Fire 90A is ideal for high flying sound in applications ranging from live, touring, DJ, installations and much more.



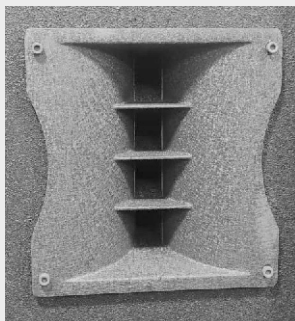
Key Features

• Enclosure Features

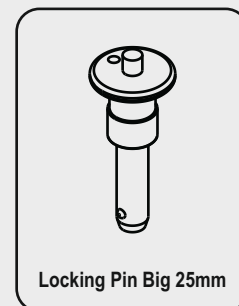
The FIRE 90A incorporates 1 x 12" Mid-Bass transducers & 1 x 2" High Quality HF transducers with state of the art Waveguide horn, all comprised into a sleek enclosure. This Array module has a horizontal coverage angle of 120° & vertical Coverage angle of 9°.



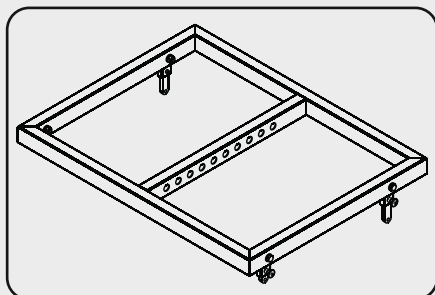
• About Waveguides



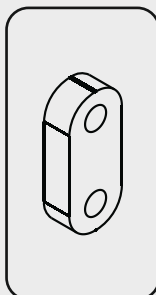
• Enclosure Hardware



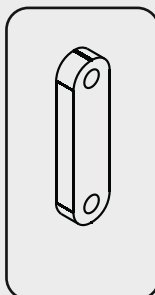
• Fire 90A Kit



Fly Bar



Inner Joining
Plate Small



Inner Joining
Plate Big

All Features



- High performance 2-way bi-amplified active line array system.
- Driven by an efficient class D amplifier.
- Integrates powerful LF & HF drivers to deliver high SPL and a wide dispersion area.
- Easy DSP sound presets: Standard / Long Throw / Short Throw / Monitor.
- CAT5e network connectivity for advanced PC-based DSP editing and speaker management.
- Built-in soft clip limiter for speaker protection.
- Constant curvature waveguide for unprecedented array coherence and dispersion.
- Coverage Pattern: 120° (Horizontal) x 9° (Vertical) for uniform acoustic coverage.
- Variable splay angles (0°, 3°, 6°, and 9°) for versatile array configurations.
- Integrated locking system quick, safe and secure installation.
- XLR input connector and link out for linking additional speakers.
- Powercon connectors for AC input and link out power supply.
- Acoustically-tuned and durable wooden cabinet enclosure.
- Attractive speaker grille and anti-scratch textured paint finish for stunning visual aesthetics.
- Dual pole mounts for multiple throw options; straight and angled (up-firing).
- Robust fly bar kit for quick rigging and flying (available separately).

System Consists of:

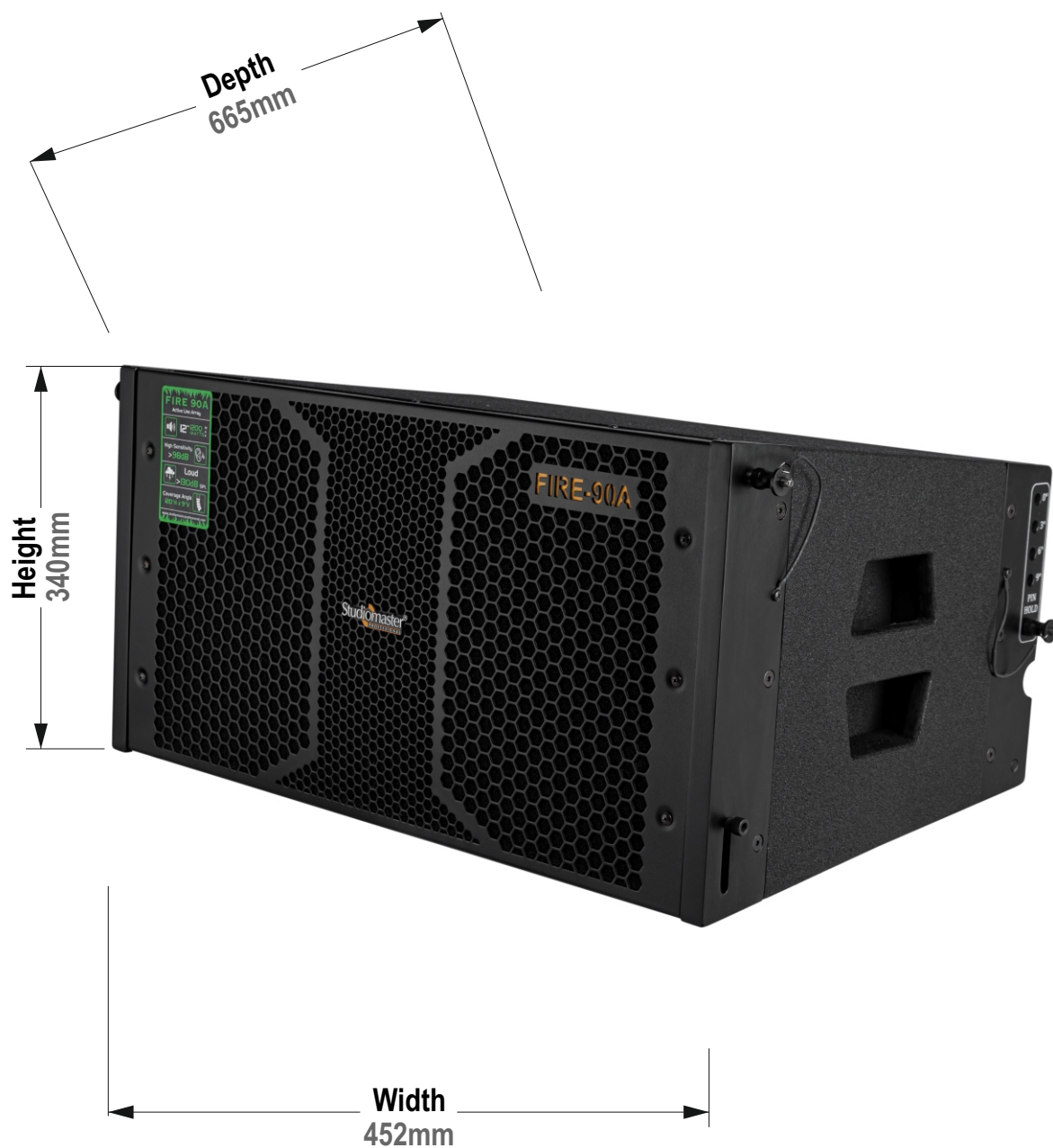
- Fire 90A Line array module
- Fly bar

Technical Specifications

Parameter	Specifications
System	2-Way Active
Power Output - RMS / Peak (Watts)	600 / 1200
Frequency Response	40Hz-20kHz
System Maximum SPL (dB)	128
Sensitivity (1w @ 1m) dB	98dB LF / 100dB HF
LF Driver Size	1 x 12" Woofer
HF Driver Size	1 x 2" Driver
Nominal Impedance (Ω)	8
Horizontal Coverage Angle	120°
Vertical Coverage Angle	9°
Variable Splay Angles	0°, 3°, 6°, and 9°
Crossover Frequency	2000Hz
Input Connectors	Balance XLR
Power supply	240V, 50Hz
Dimensions (L x W x H) mm	665 x 452 x 340
Net Weight Fire 90A (Kg)	36
Net Weight Fire 90A Fly Bar (Kg)	17



Dimensions



Support

For sales, support, pricing and availability:
Email: info@audioplus-india.com
Telephone: 022-42869000 / 001
WhatsApp: +91-8879028079
(Monday to Saturday between 10:00 a.m to 6:00 p.m.)
Contact Us:
<http://www.studiomasterprofessional.com/home/contact>



Scan QR Code for More Details



Scan QR Code to Watch Video

For after-sales service and support: Email: sales.support@audioplus-india.com Telephone: 022-42869010 / 49 / 57

Subscribe to our Channel

Studiomaster[®]
PROFESSIONAL

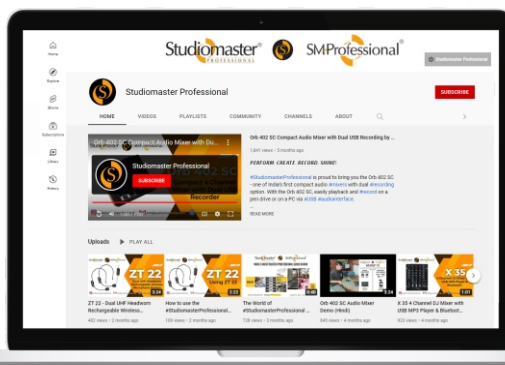
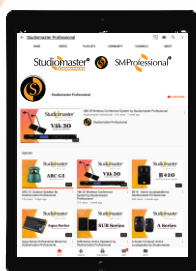


SMProfessional[®]

On



YouTube



SCAN
REGISTER
& WIN



SUBSCRIBE
ON
YOUTUBE



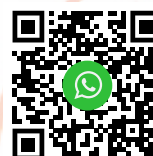
FOLLOW US
ON
INSTAGRAM



VISIT
OUR
WEBSITE



SCAN
TO
WHATSAPP



* Product design and specifications are subject to change without notice.

Studiomaster Professional is a registered trademark of Audioplus in India. © Copyright Audioplus, 2008. All rights reserved. Any unauthorised reproduction or use of logos, images or design elements is strictly prohibited by law. No part of the compilation may be reproduced in any manner or translated without written permission.

Code: Rev000 / SMP Fire 90A Datasheet / Jan 2026

Brought to you by:



A1/A2, Giriraj Indl. Est., Mahakali Caves Road, Andheri (E), Mumbai - 400 093. India Tel.: +91-22-4286 9000/ 001 W: www.audioplus-india.com