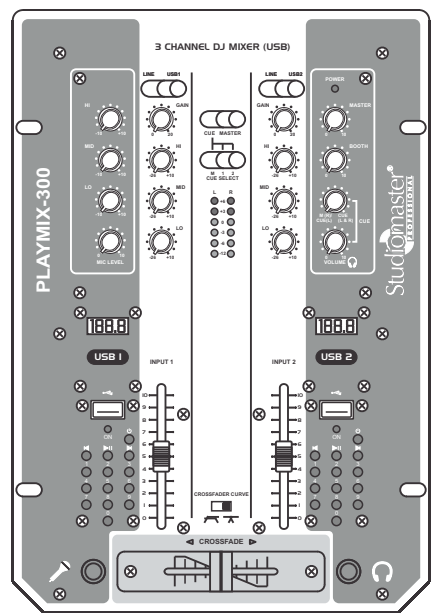
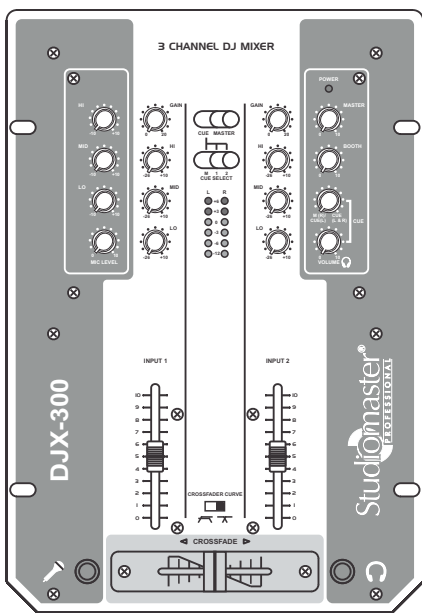


Studiomaster[®]

PROFESSIONAL
DJ SERIES

DJX-300 / PLAYMIX-300

3-CHANNEL DJ MIXER



Index:

1.....	Introduction
2.....	Features at a Glance
3.....	Controls & Operations
4.....	Connections & Settings
5.....	Specifications
6.....	Connection Diagram
7.....	Product Care Instructions

1. Introduction

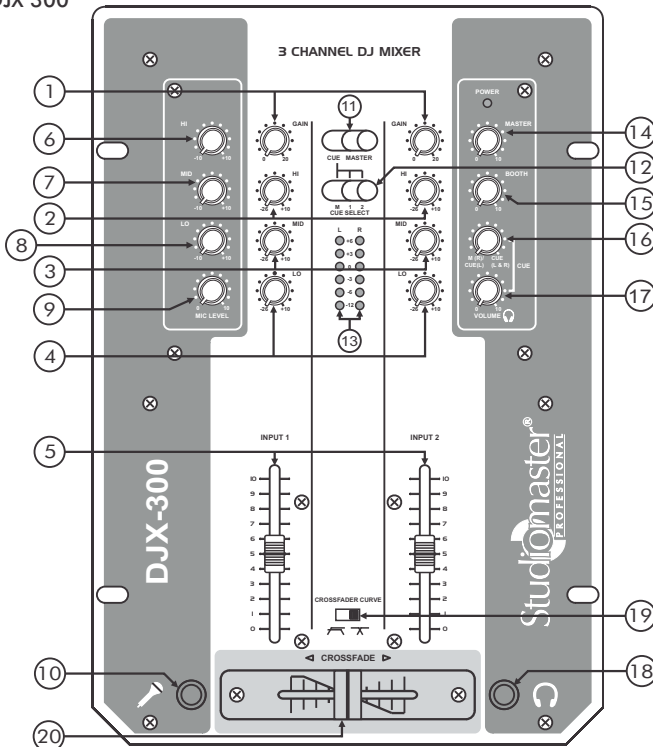
Thank you for buying the Studiomaster Professional DJX 300 & PLAYMIX 300 Mixer. To ensure maximum performance & safety, please follow this instruction manual carefully. Please retain this manual for future reference. For any complaint, feedback or testimonials please contact our distributor / dealer. Retain the cartons for future use should the product require servicing / maintenance.

2. Features at a Glance

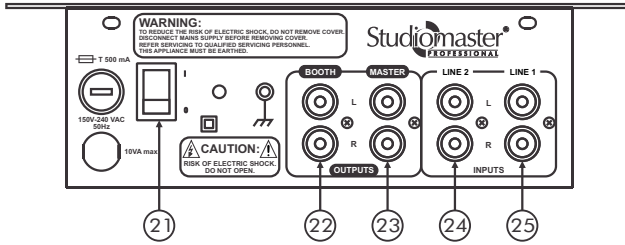
- Professional 3-channel low-noise DJ mixer with state-of-the-art technology.
- Two Stereo channels.
- Microphone input with low noise and 3-band equalizer.
- 60mm long faders.
- Very smooth cross-fader for utmost reliability with curve selection.
- 3-band kill EQ (-26 dB) and Gain control per channel.
- Master and Booth outputs.
- Monitor function with master/PFL mix option.
- Precise peak-hold level master with dedicated PFL bar graph.
- High-quality components and exceptionally rugged construction to ensure long life.
- 240V AC mains as well +24V DC (Battery) operated.
- The unit can be used for free standing or rack mounted.

3. Controls & Operation

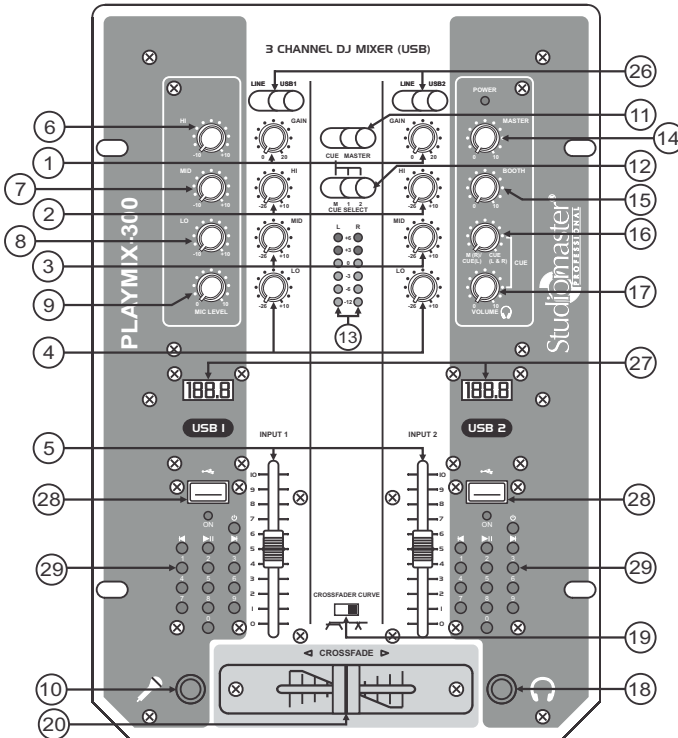
- Front Panel DJX 300



• Rear Panel DJX 300/PLAYMIX-300



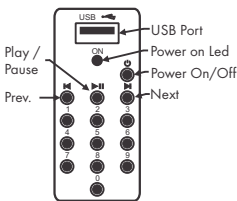
• Front Panel PLAYMIX 300



- | | |
|-------------------------|--|
| 1. GAIN(2x) | Presetting of the input volume of both channels. |
| 2. TREBLE(2x) | Treble control for both channels to Cut or Boost High frequencies. |
| 3. MID(2x) | Mid-range tone control for both channel to Cut or Boost Mid frequencies. |
| 4. BASS(2x) | Bass control for both channels to Cut or Boost Low frequencies. |
| 5. INPUT 1 & 2 | Slider controls for both channels to control the input signal level. |
| 6. TREBLE (MIC) | Treble control for the Mic input to Cut or Boost High frequencies. |
| 7. MID (MIC) | Mid-range control for the Mic input to Cut or Boost Mid frequencies. |
| 8. BASS (MIC) | Bass control for the Mic input to Cut or Boost Low frequencies. |
| 9. MIC LEVEL | Setting of the microphone output level. |
| 10. MICROPHONE | 6.3mm Jack connector for the mic. |
| 11. MASTER/CUE SELECTOR | Selects the bargraph for Master or CUE operation. |
| 12. CUE SELECT | Selects the channel to be heard through the headphone. |

- | | |
|------------------------|---|
| 13. BAR GRAPH | Displays the strength of the output signal. |
| 14. MASTER CONTROL | Master control to control the signal level through master output. |
| 15. BOOTH CONTROL | Controls the signal level through booth output. |
| 16. MASTER/CUE CONTROL | Select the Master(R)/Cue(L) or Cue(L & R) signal through the headphone. |
| 17. CUE LEVEL | Sets the volume for headphone. |
| 18. HEADPHONES | 6.3mm Jack socket for the headphone. |
| 19. CROSSFADER CURVE | Selects the curve deviation. |
| 20. CROSSFADE | Fast fading between the channels. |
| 21. POWER SWITCH | To switch ON/OFF the unit. |
| 22. BOOTH OUTPUT | RCA sockets for Booth output. |
| 23. MASTER OUTPUT | RCA sockets for Master output. |
| 24/25. LINE INPUT | RCA sockets for connection to a LINE (CD player, tuner etc) unit for both channels. |
| 26. LINE/USB SWITCH | * Selects LINE/USB input for channel 1 & 2. |
| 27. NUMERICAL DISPLAY | * It displays the current playing track number of USB channel 1 & 2. |
| 28. USB PORT | * To play the WMA, MP3 songs from external 'USB flash drive' for USB channel 1 & 2. |
| 29. KEYPAD | * To control the functions like Play/Pause, Next, Prev & songs selection for USB channel 1 & 2. |
- * Marked functions are available only in "Playmix 300".

USB Module Operation



Play Operation:

If the USB flash drive is connected to the USB port, it can play automatically after power on and it plays the track which was playing during last power off. In pause status, it begin to play after PLAY/PAUSE key.

Next/Prev. Operation:

The module plays next or previous track when press the NEXT or PREV. key.

Selecting Required Track Number to Play:

During play back if user wants to play another track number then user can directly select required track number by pressing numeric keys on keypad. Ex.: Press 2, 5 and 1 no. keys to play the track number 251.

4. Connections & Settings

• CHANNELS 1 & 2

These two stereo channels are totally identical. The inputs are suitable for a CD player / music source. The RCA sockets for the CD player (LINE:24/25) are located at the rear panel. Every channel is fitted with a GAIN control for the input sensitivity (1), a 3-band tone control (2/3/4) and a sound level slider control (5).

• CUE LEVEL SETTING

Set the Bargraph (13) to CUE through CUE/MASTER switch (11) and select the channel to be set via the CUE SELECT switch (12). Set the GAIN in such a way that the level on the Bargraph displays about 0dB. Set the tone control as required. If necessary adjust the GAIN again so that the Bargraph display once again about 0dB.

• MICROPHONE SECTION

The microphone jack (6.3mm) can be connected on the top (10). The microphone channel features a 3-band tone control (6/7/8) and a sound level control (9).

• CROSSFADER FUNCTION

This slider control (20) allows you to switch quickly between the sound of two different channels. Example: If you push the crossfader completely to the left, the sound of channel 1 is audible. If you push the crossfader to the right, you can hear only channel 2. The slider control of the two channels must of course be lifted. The

CROSS FADER CURVE selector (19) determines the curve deviation. Example : If this switch is set to the right, the volume of both channels fades smoothly over when the crossfader is moved. If the switch is set to the left, the sound fades immediately over to the other channel (this setting is ideal for scratching & cutting).

- **MASTER SETTINGS**

The MASTER control (14) is setting the total output level of the both channels & the microphone to the amplifier. If you want to monitor the output level to the amplifier on the LED Bargraph, set the CUE/MASTER switch (11) to MASTER. The RCA connectors for the connection to the amplifier (23) are located at the rear panel. They are identified as MASTER.

- **BOOTH SETTING**

The BOOTH control (15) is setting the total output level of both channels & microphone going to BOOTH output RCA connector (22).

- **HEADPHONE SECTION**

The headphone section is fitted with a 6.3mm stereo jack that is located on top (18) of the unit. The CUE SELECT switch allows to choose if you wish to listen channel 1 or 2 or both via the headphone. The CUE LEVEL (17) control sets the output level to the headphone. This control (16) determines the left / right split of the master volume & the CUE volume. Example: If the control is completely set to the left, the master (right channel) & the CUE (left channel) volume are both audible at the same time. If the control is set to the right, only the CUE signal (both right and left channel) is audible.

- **SWITCHING ON**

Once the audio sources & the amplifier have been connected to the mixer, set all slider controls to the minimum. Before switching on the unit, please check all controls and faders are at minimum position. Then switch on the power of the mixer (21) and after that the amplifier.

- **LINE/USB**

The switch (26) is used to select either LINE or USB input for channel 1 & 2. (only for Playmix 300)

Replacement of the Crossfader

This control is used very frequently and needs replacement after some time. This is simple to do. Remove the two small screws on the small panel of the control with a cross-headed screwdriver. Pull out the control & unplug the connectors. Plug the connectors back to a new crossfader (this can only be done in one way). Insert the control back into the mixer and fasten the two screws.

Some Basic Tips

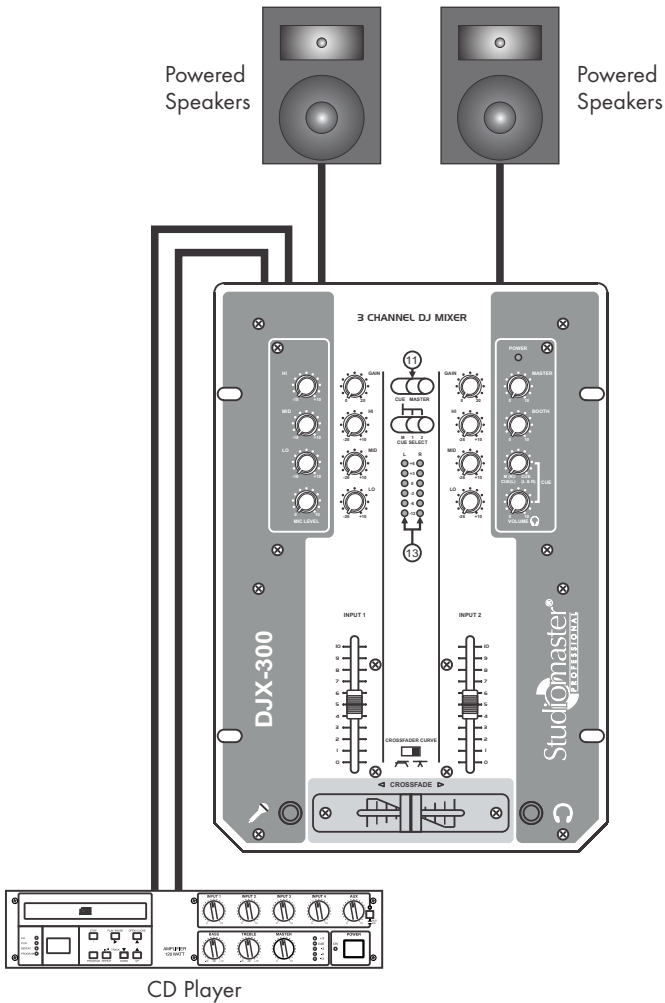
1. Find Tempo/BPM of the song to be mixed.
2. Beat matching is the most important factor in mixing. Try to master this art. The most commonly used beat currently is the 4/4 Structure.
3. Learn to mix with the up faders first and then proceed to the crossfader.
4. Use the CUE feature on the DJ mixer to listen to the next track before it is being introduced into the mix.
5. Make sure you listen to all new & old genres of music, as this may give you your next creative spark.
6. While using the USB flash drive in Playmix 300, make sure you know the order of songs. Additionally a print out of the track list will help you tremendously.
7. Make sure that the Gain and EQ settings on both the channels match. This will help you get a great sounding mix.
8. With the Playmix 300 on your side, all you need is 2 Pen drives, a Pair of Active speaker & you are ready to go.
9. Make sure you learn all the features on your Studiomaster Professional DJ Series Mixer this will help you take your Mix to another level.
10. Practice your set before any major gig.
11. Finally, Practice Practice Practice is the golden rule to get a great mix.

5. Specifications

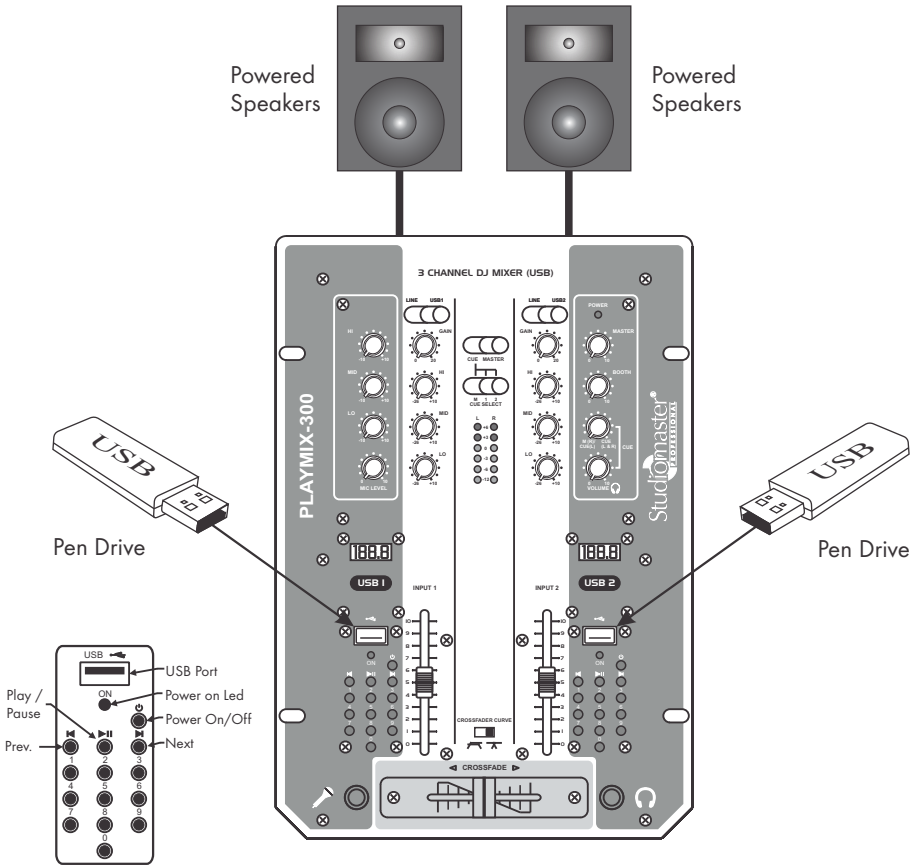
Input sensitivity:	Mic	- 57 dBu	Frequency response:	±3.0dB @ 20Hz-20 KHz
	Line	0.0 dBu	Distortion(THD):	0.05 %
Output sensitivity:	Output	0.0dB / 10 KΩ	Signal-to-noise ratio (SNR):	Mic: -55dB, Line: -75dB
Equalizer:	Treble	Line +10/-26dB, 10 KHz	Talkover:	-60 dB
		Mic ±10dB/10 KHz	Headphones:	1.5V / 400Ω
	Mid	Line+10/-26dB, 1.2 KHz	Power supply	240 Vac @ 50Hz
		Mic ±10dB/1.0KHz	Power Consumption:	10W Max
	Bass	Line+10/-26dB, 50 Hz	Dimensions:	295 x 204 X 83 mm
		Mic ±10dB/100Hz	Weight:	1.8 Kg.

6. Connection Diagram

- DJX 300 General Setup



- PLAYMIX 300 General Setup



7. Product Care Instructions

- Do not drop the mixer; this could severely damage the products.
- Please keep this product away from direct sunshine & rain.
- Please keep this product away from heavy magnetic or electromagnetic fields, it could affect the product performance.
- Please disconnect from power supply when the product is not being used for a long time.
- Do not open any of the components yourself, for repairs please get in touch with your Studiometer dealer.
- It is recommended to place product in flight case while transportation.

Range of Studiomaster Professional Products.

Wired Microphones

SM 100XLR
TRIO 100
SM 200XLR
SM 300I
SM 400XLR
SM 500XLR
SM 600XLR
SM 650XLR
SM 800C
SM 900C
SBM 10
SBM 20
Flex 2
Flex 4

Wireless Microphones

BR 12 Series
BR 28 Series
BR 48 Series
ER 11 Series
ER 31 Series
ER 58 Series
KR 12 Series
GR 12 Series
MR 12 Series
TR 47 Series

Crossovers

SX-2
SX-321
SX-421
SX-521
SDX-4

Processors

DD 1000
SEQ 152
SEQ 312
Multi 3
SFX 8
SPS 8
Phantom 11

Sound Box

SPA 25FX
SPA 80FX

Stabilizers

SVC - S1000
SVC - S2000
SVC - S3000
SVC - S5000
SVC - S8000
SVC - S10000

Speaker Stands

SS 10B
SS 20S
WS 10

Mixers

~ **Basic Series**
Basic CUB
Basic CUBU
Basic CUBS

~ **DJ Mixers**
DJX 300 (Black & White)
Playmix 300
DJX 325
DJX 626
DJX 825
DJX 925
DJX 975
DMX 5

~ **Diamond Club Series**
Diamond Club 6.2
Diamond Club 8.2
Diamond Club 8.2EFX
Diamond Club 12.2
Diamond Club 12.2EFX
Diamond Club 12.2USB
Diamond Club 16.2
Diamond Club 16.2EFX

~ **Diamond Supreme Series**
Diamond Supreme 7
Diamond Supreme 12
Diamond Supreme 12U
Diamond Supreme 16U

~ **Club 2000 Series**
C 142
C 182
C 142EFX

~ **Platinum Series**
Platinum Basic MKI
Platinum MKIII

~ **Diamond Pro-3 Series**
Diamond Pro-3 12.3
Diamond Pro-3 16.3

~ **Pro VI Series**
Pro 16.6
Pro 24.6
EP 7

~ **Air Series**
AiR 2
AiR 4
AiR 6
AiR 8
AiR 12
AiR 16
AiR 24
AiR X 10
AiR X 14
AiR X 18

AiR Pro 24
AiR Pro 36
Aura 14
~ **CD/USB Media Player**
MP 4000
MP 2000

Amplifiers

~ **DJA Series**
DJA 100
DJA 550
DJA 1000
DJA 2500
DJA 3200
DJA 4000

~ **PA Series**
PA 1.5
PA 2.0
PA 3.0
PA 4.5
PA 6.0
PA 7.5

~ **DPA Series**
DPA 2000
DPA 3200
DPA 4500
DPA 5000
Road 7

~ **Arena Series**
Arena 20
Arena 30

~ **Industrial Amplifier**
ARC 120A

Component Speakers

~ **S-Series**
SWF 18120
SWF 18100
SWF 1880
SWF 1560
SMB 1545
SMB 1530
SMB 1230
SHF 0104
SHF 0210

~ **E-Series**
EMB 1225
EMB 1530

~ **Titan Series**
THF 0208
TMB 1535
TMB 1555
TWF 1580

Passive Speakers

~ **S-Series**
S5215
S5225
S8018
S8118
S8028
S8128
S9022

~ **Fire Series**
Fire 51
FIRE 51A
Fire 55
Fire 84

~ **DYS Series**
DYS-208
DYS-12M

~ **XVP Series**
XVP1540
XVP1540M
XVP 1560
XVP 2585
XVP 25A2
XVP 1808

~ **Aria Series**
Aria 8
Aria 12
Aria 15

~ **Line Array System**
SLA-40

Powered Speakers

~ **B Series**
B 200
B 400 (Black & White)
B 400U
B 400UB

~ **OP Series**
O 215
O 415
O 415U
O 515

~ **SUB Series**
O 12SUB
O 15SUB
O 18SUB

Active Monitors

Sat 5
Sat 10S

* Design and specification are subject to change without notice.

Studiomaster® is a registered trademark of Audioplus in India. © Copyright Audioplus, 2008. All rights reserved. Any unauthorised reproduction or use of logos, images or design elements is strictly prohibited by law. No part of the compilation may be reproduced in any manner or translated without written permission.

Brought to you by: A1/A2, Giriraj Industrial Estate, Mahakali Caves Road, Andheri (East), Mumbai - 400 093, India
Tel.: 022-42869043 / 4286 9076 / Fax: 022 - 26871453
E info@audioplus-india.com W www.audioplus-india.com/www.studiomasterprofessional.com

AUDIOPLUS